

Material:

Housing: High temperature housing withstands IR and VPR soldering methods.

Contacts: Brass.

Plating: Gold plated over nickel.

Tin plated over nickel.

Selective gold plated: Gold plated on mating area and tin plated on solder tail.

Electrical Characteristics:

Current Rating: 1 AMP.

Insulator Resistance: 5000MΩmin. at DC 500V.

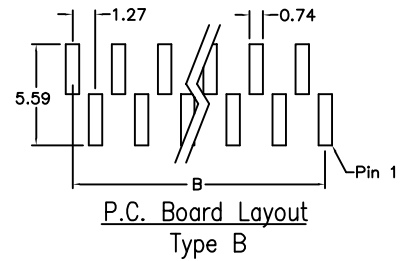
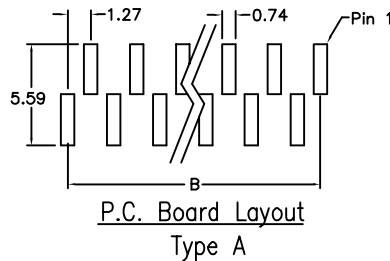
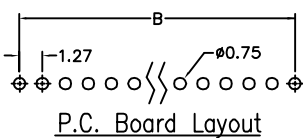
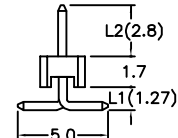
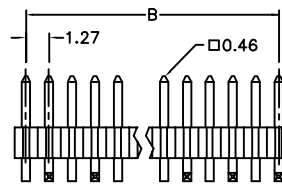
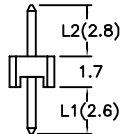
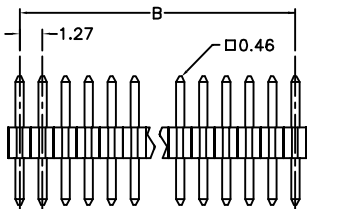
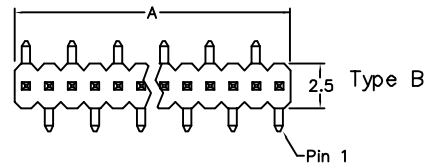
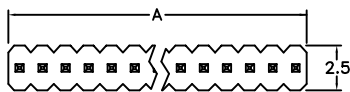
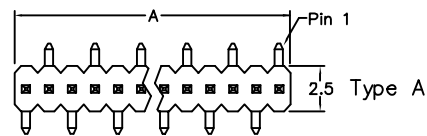
Contact Resistance: 20mΩmax. at DC 100mA.

Operating Temperature: -65°C~+125°C.

Max Processing Temperature: 230°C for 30~60 seconds.

Features:

- * Choice of through-hole and surface mount.
- * Extremely low profile 1.7mm(0.067").
- * Custom design offered.



Position	3 Thru 32
Dimension	
A	1.27 X No. of Positions
B	1.27 X No. of Positions -1.27

Ordering information

PH21- 1 32 1 1 A /L1 /L2
 Series Single Row No. of Pin Per Row 3: Selective Gold Plated 1: Straight *Foot Print
 1: Gold Plated 3: Surface Mount Type A & B
 2: Tin Plated

Custom Design: Straight (i.e. PH21-13211/L1/L2)
 Surface mount (i.e. PH21-13213A/L1/L2)